

Welcome



Useful Information

Perseverance Works

Perseverance Works,
25-27 Hackney Road
London
E2 8DD
Office: 0207 749 0500

Opening Times

Lounge: 7:30 am - 6 pm
Studios: 8 am - 6 pm

Wimborne House

151-155 New North Road
London
N1 6TA
Office: 0207 749 0500
Day Contact: 02076847555

Lighting

Unit B09, Leyton Industrial
Village, Argall Ave,
London E10 7QP
Equipment@jjmedia.com
Office: 020 7688 0203



Milliners

Milliners is JJ Media Group's Members Work Lounge & Reception. A space for our media mavens to engage with the Group's services and enjoy a collaborative working environment. Home to a catalyst for creation.

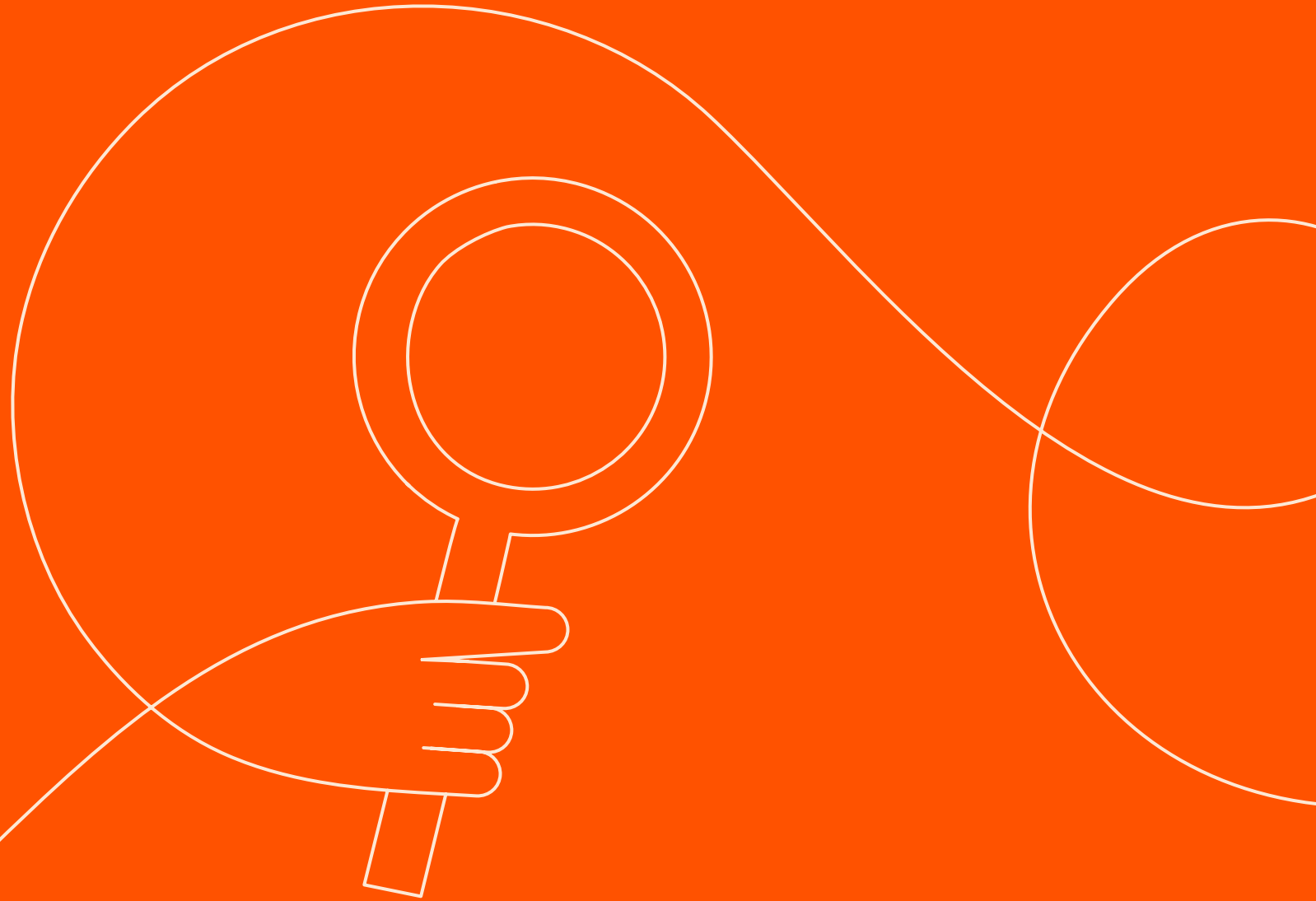
Reception

The reception will open weekdays at 7:30am and remain open until all shoots have finished that day.

Deliveries

Any deliveries can be accepted from couriers the day before your shoot provided that the studio you booked is free. These must with us by no later than 5:30 pm and must be collected at the end of your shoot date. All parcels must be labelled with the correct Studio & Client name to save any confusion when accepting.

Getting Here



Transport

By Tube and Train

Old Street Station - 10 minutes walk

Hoxton Overground - 5 minute walk

Shoreditch High Street Overground - 5 minute walk

Liverpool Street Station - 12 minute walk

By Bus

55 to Oxford Street

26 from Waterloo

48 London Bridge

Car Park

Parking is available for clients and must be arranged prior to shoot. Please report to a member of the Front Of House Team before parking. These are charged at £30 per space per day.

To Access the car park you go through the courtyard, through the underpass, up the ramp and take an immediate left to enter the underground carpark. There is a 2m height limit for the entrance to the carpark.

Taxi's

We will be more than happy to book you a taxi and add this to your invoice.

Catering

We will supply you with the best catering Shoreditch has to offer. This must be ordered 48 hours before your shoot date. All food consumed on the site must be ordered from our preferred caterers. A menu will be sent you to via email.

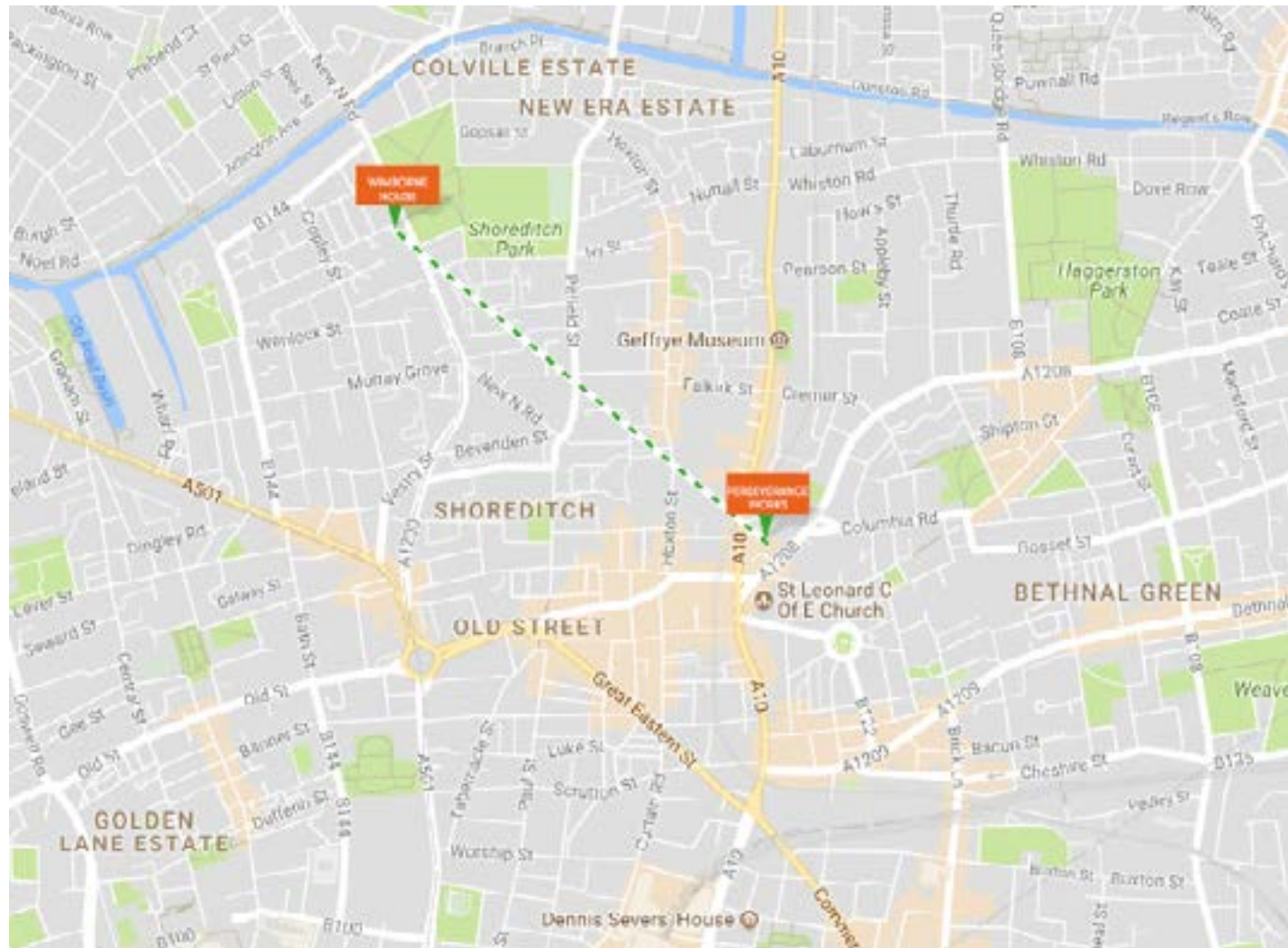
Mini Bar

All studio fridges are stocked with a range of refreshments for your team. Prices available on request.

Equipment

We will supply you with all the equipment you need for your shoot. Please send over your equipment list for us to be able to give you a quote. We will require your list no later than 48 hours before your shoot date. Additions can be made throughout the day.

Perseverance Works,
25-27 Hackney Road
London
E2 8DD



Weekend Access



Weekend Access

Weekend Access to Perseverance is via the Waterson Street entrance situated in between Hackney Rd & Kingsland Rd.

The gate is located at 14 Waterson Street and will have security to allow access.

Access Point

